



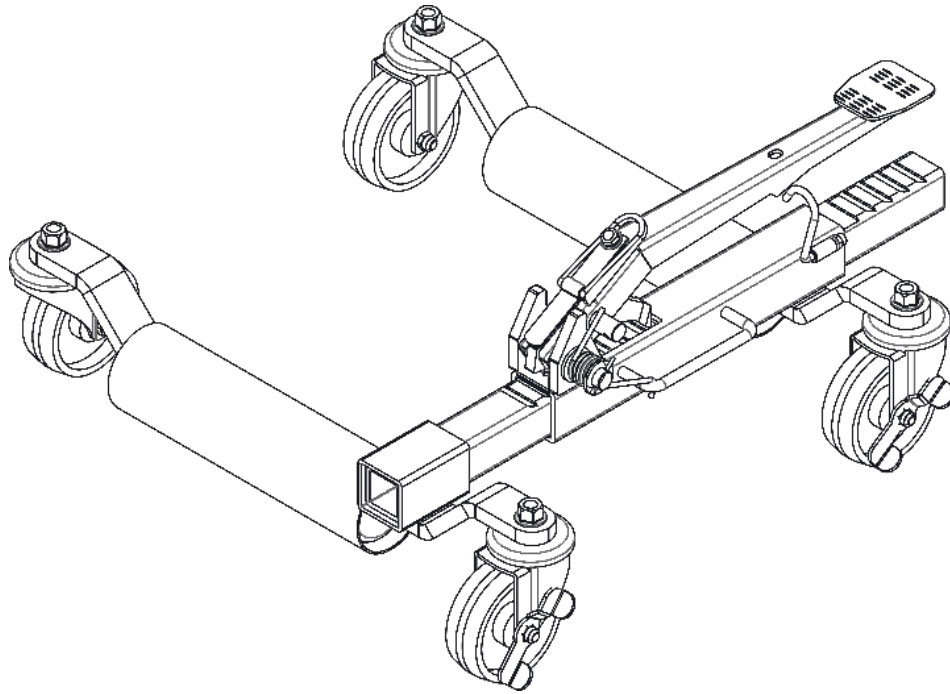
30440 Agoura Road.
Agoura Hills, CA 91301 USA
Toll Free: (800) 253-2363
Tel: (805) 933-9970
rangerproducts.com

Mechanical GoCart™ Vehicle Dolly

Assembly and Operation Manual

Manual P/N 5900396 — Manual Revision A1 — February 2024

Model: RCD-1500MP



Designed and engineered by BendPak Inc. in Southern California, USA. Made in China.



Read the *entire contents* of this manual *before* using this product. Failure to follow the instructions and safety precautions in this manual can result in serious injury or death. Make sure all other operators also read this manual. Keep the manual near the product for future reference. **By proceeding with setup and operation, you agree that you fully understand the contents of this manual and assume full responsibility for product use.**

Manual-RCD-1500MP Rolling Car Dolly, *Assembly and Operation Manual*, P/N 5900396, Manual Revision A1, Released February 2024.

Copyright-Copyright © 2024 by BendPak Inc. All rights reserved. You may make copies of this document if you agree that: you will give full attribution to BendPak Inc., you will not make changes to the content, you do not gain any rights to this content, and you will not use the copies for commercial purposes.

Trademarks-BendPak, the BendPak logo, Ranger, and the Ranger logo are registered trademarks of BendPak Inc. All other company, product, and service names are used for identification only. All trademarks and registered trademarks mentioned in this manual are the property of their respective owners.

Limitations-Every effort has been made to use complete and accurate instructions in this manual. However, product updates, revisions, and/or changes may have occurred since this manual was published. BendPak/Ranger reserves the right to change any information in this manual without incurring any obligation for equipment previously or subsequently sold. BendPak/Ranger is not responsible for typographical errors in this manual. Feel free to contact us at any time to get the latest information about any product by scanning the QR code or visiting: rangerproducts.com.



SCAN FOR DIGITAL PDF

Warrant-The BendPak/Ranger warranty is more than a commitment to you: it is also a commitment to the value of your new product. For full warranty details, contact your nearest BendPak/Ranger dealer or visit bendpak.com/support/warranty. Go to bendpak.com/support/register-your-product/ and fill out the online form to register your product (be sure to click **Submit**).

Safety-Your new product was designed and manufactured with safety in mind. Your safety also depends on proper training and thoughtful operation. Do not set up, operate, maintain, or repair the unit without reading and understanding this manual and the labels on it; **do not use this product unless you can do so safely!**

Owner Responsibility-In order to maintain your product properly and to ensure operator safety, it is the responsibility of the product owner to read and follow these instructions:

- Follow all installation, operation, and maintenance instructions.
- Make sure product setup conforms to all applicable local, state, and federal codes, rules, and regulations, such as state and federal OSHA regulations.
- Read and follow all safety instructions. Keep them readily available for operators.
- Make sure all operators are properly trained, know how to safely operate the unit, and are properly supervised.
- Do not operate the product until you are certain that all parts are in place and operating correctly.
- Carefully inspect the product on a regular basis and perform all maintenance as required.
- Service and maintain the unit only with approved replacement parts.
- Keep the manual with the product and make sure all labels are clean and visible.
- Only use this product if it can be used safely

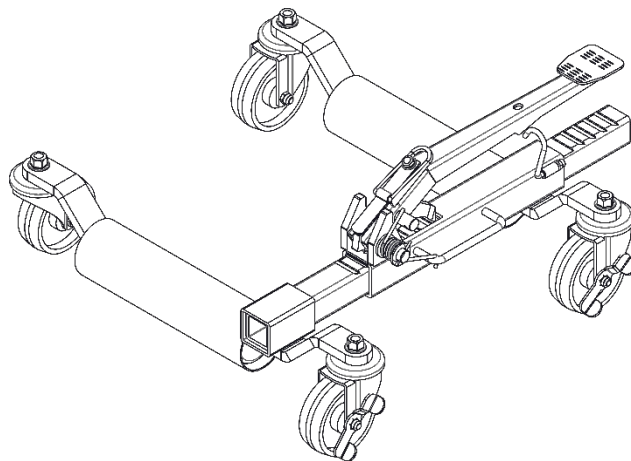


Table of Contents

Introduction	3	Operation	7
Shipping Information	3	Maintenance	9
Safety Considerations	4	Labels	10
Specifications	5	Troubleshooting	11
Assembly	5	Parts Drawing	11

Introduction

This manual describes the **RCD-1500MP** Mechanical GoCart™ Car Dollies, holds up to a maximum 11 in. (279 mm) Tire Width and 34 in. (864 mm) Tire Diameter (height). Car Dollies are also referred to as Vehicle Positioning Jacks, and each supports up to 1,500 lbs. (680 kg). Sold as a Pair.

More information about the full line of Ranger Products is available by scanning the QR code or visiting rangerproducts.com.



SCAN FOR VIDEO

This manual is mandatory reading for all RCD-1500MP Car Dolly users.

⚠ DANGER

Be very careful when setting up, operating, maintaining, or repairing this equipment; failure to do so could result in property damage, product damage, injury, or (in very rare cases) death. Make sure only authorized personnel operate this equipment. All repairs must be performed by an authorized technician. Make sure to read and follow the instructions on the labels on the unit.

Keep this manual near the equipment so that anyone who uses it can read it.

Technical support is available by calling Ranger Products **(800) 253-2363** select option 7, then 4.

Shipping Information

Your equipment was carefully checked before shipping. Nevertheless, you should thoroughly inspect the shipment **before** you sign to acknowledge that you received it.

When you sign the bill of lading, it tells the carrier that the items on the invoice were received in good condition. ***Do not sign the bill of lading until after you have inspected the shipment.*** If any of the items listed on the bill of lading are missing or damaged, do not accept the shipment until the carrier makes a notation on the bill of lading that lists the missing or damaged goods.

If you discover missing or damaged goods **after** you receive the shipment and have signed the bill of lading, notify the carrier at once and request the carrier to make an inspection. If the carrier will not make an inspection, prepare a signed statement to the effect that you have notified the carrier (on a specific date) and that the carrier has failed to comply with your request.

It is difficult to collect for loss or damage after you have given the carrier a signed bill of lading. If this happens to you, file a claim with the carrier promptly. Support your claim with copies of the bill of lading, freight bill, invoice, and photographs, if available. Our willingness to assist in helping you process your claim does not make us responsible for collection of claims or replacement of lost or damaged materials.

Safety Considerations

Read this manual carefully before using your new product. Do not use the product until you are familiar with all operating instructions and warnings. Do not allow anyone else to use the product until they are also familiar with all operating instructions and warnings.

⚠ WARNING California Proposition 65. This product can expose you to chemicals including styrene and vinyl chloride which are on the list of over 900 chemicals identified by the State of California to cause cancer, birth defects or reproductive harm. **ALWAYS** use this product in accordance with BendPak's instructions. For more information go to www.P65Warnings.ca.gov.

Safety Information

Please note the following:

- The RCD-1500MP is a Car Dolly Vehicle Positioning Jack. **Use it only for its intended purpose; as equipment to move and reposition vehicles.**
- The RCD-1500MP is **NOT a TOY, nor a personal Skating Device. Do Not allow Children** or those unfamiliar with its operation to use or play with the RCD-1500MP.
- The Positioning Jacks **cannot** be used to hold a load on a *long-term* basis. Use them to hold a Vehicle, perform the desired work, then immediately lower the Vehicle back down to the ground.
- The product should only be operated by authorized and capable personnel. Keep children and untrained personnel away from the product.
- Wear appropriate work clothes, steel-toed boots, and ANSI-approved safety goggles.
- **Do not make any modifications to the product; this voids your warranty.**
- Make sure all operators read and understand the *Assembly and Operation Manual*. Keep the manual near the device at all times.
- Make a visual inspection of the product before each use. Do not use the product if you find any missing or damaged parts. Instead, take the unit out of service, then contact an authorized repair facility, your distributor, or Ranger Products at **(800) 253-2363** select option 7, then 5.

Symbols

Following are the symbols used in this manual:

- ⚠ DANGER** Calls attention to a hazard that **will** result in death or injury.
- ⚠ WARNING** Calls attention to a hazard or unsafe practice that **could** result in death or injury.
- ⚠ CAUTION** Calls attention to a hazard or unsafe practice that **could** result in personal injury, product damage, or property damage.

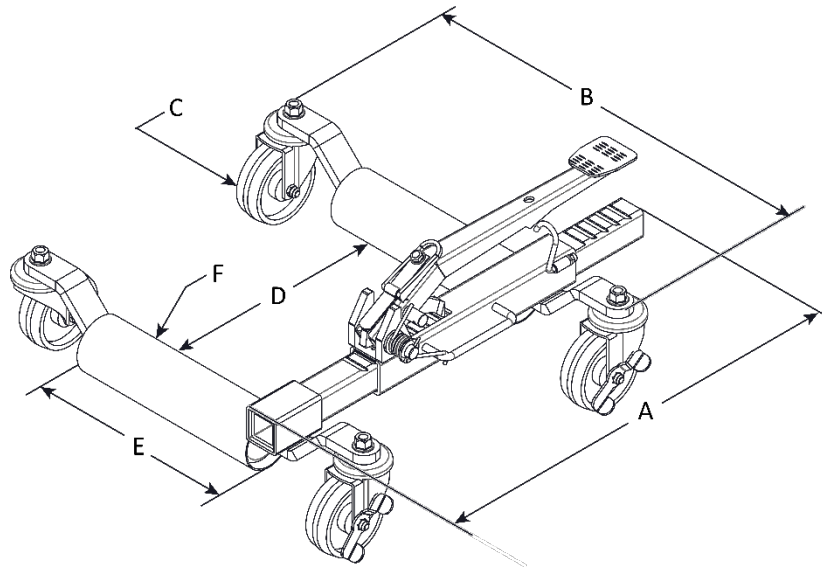
Liability Information

BendPak/Ranger assumes **NO** liability for damages resulting from:

- Use of the equipment for purposes other than those described in this manual.
- Modifications to the equipment without prior written permission from BendPak/Ranger.
- Injury or death caused by modifying, disabling, overriding, or removing safety features.
- Damage to the equipment from external influences.
- Incorrect operation of the equipment.

Specifications

Model	RCD-1500MP
Holding capacity, each	1,500 lbs. (680 kg)
Load Rating; 4 Dollies	6,000 lbs. (2,722 kg) Max.
Tire Width Max.	11 in. (279.4 mm)
Tire Diameter Range	15 in. – 34 in. (381 mm – 864 mm)
Stowed Dimension	24 in. (L) x 24.5 in. (W) x 8.5 in. (H) (610 mm (L) x 622 mm (W) x 216 mm (H))



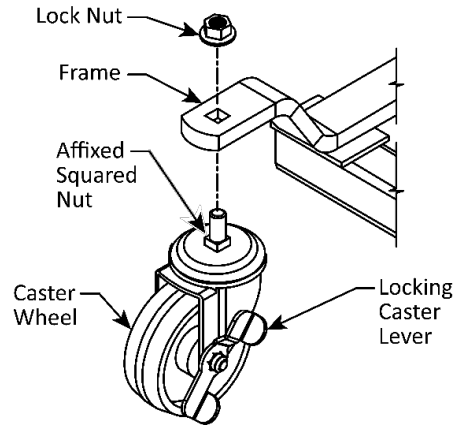
RCD-1500MP Dolly Component Dimensions		
A	Frame Length	24 in. (610 mm)
B	Frame Width, w/o Casters	23 in. (584 mm)
C	Caster Diam. x Width	4 in. x 1.25 in. (102 mm x 32 mm)
D	Min. - Max. Roller Spread Adjustment	9.5 in. - 25.5 in. (241 mm - 648 mm)
E	Roller Width	11 in. (279.4 mm)
F	Roller Diameter	3 in. (76 mm)

Assembly

This section describes how to prepare your Car Dolly Positioning Jacks so that they are ready to use. Although most of the car dolly's components have been installed at the factory, you will need to attach four Caster Wheels.

To assemble your Car Dollies, follow these simple steps:

1. Remove the Positioning Jacks from the packaging and perform an overall inspection of the equipment.
2. Place the Positioning Jacks on a flat, level, hard and smooth surface suitable to work on.



3. Attach one Caster to each frame corner by engaging the caster stud's affixed square-nut; so that it seats into the frame's square opening on each of the Car Dollie's four legs. Note that Casters equipped with locks (2 per dolly) are installed to the lever-side of the dolly.
4. With the caster-stud's nut held seated in the frame opening, hand thread the Lock Nuts and then securely tighten with an appropriate wrench and repeat to all remaining Caster nuts. With all casters tightly secured, apply multi-purpose lithium lubricant or equivalent to each of the 4 caster axles and the 4 top bearing swivel areas. Wipe away excess lubricant.

Review Final Checklist before Operation

- A visual inspection should be made prior to use of the Positioning Jacks. The inspection should check for smooth rolling, abnormal conditions, damaged, lose, or missing parts.
- Any product that is found to be damaged or operates in an abnormal manner, **must** be repaired, or removed from service immediately.
- If the product is subjected to an abnormal load or shock, it **must** be taken out of service immediately and be inspected by a qualified service center.

⚠ DANGER Do not leave the vehicle unattended with all Wheel Dollies UP and vehicle tires away from the ground, or in the vicinity of any slope or downward area, where the vehicle may begin to roll away from the operator's control.

⚠ DANGER Failure to heed these warnings may result in loss of Load, damage to Positioning Jacks, and/or failure resulting in property damage, personal or fatal injury.

⚠ WARNING Do **not** exceed the rated capacity of 1,500 lbs. (680 kg) for each Positioning Jack. Overloading can cause damage to, or failure of the Positioning Jack.

⚠ WARNING Do **not** allow anyone to ride or skate on the Rolling Jack. Injury may occur.

⚠ WARNING The Vehicle Positioning Jacks are designed for use only on hard, smooth level surfaces such as concrete or suitable asphalt that is not exposed to high temperatures. Use of the Jacks on other than hard level surfaces can result in instability of the Jack and possible loss of the Load on the Positioning Jack.

⚠ WARNING Keep hands and feet clear of all Pinch Points.

⚠ WARNING Do **not** allow anyone to occupy a vehicle while it is raised on the Dollies.

- ⚠ WARNING** Due to the potential hazards associated with lifting and moving vehicles, alterations are not permitted, and voids the warranty.
- ⚠ WARNING** The Vehicle Positioning Jacks are to be operated by properly trained and capable personnel only. Operation by untrained personnel may result in injury and/or property damage. Children should not be allowed to operate the dolly, nor use it as a toy, and/or occupy the surrounding area during use.
- ⚠ WARNING** Be aware that sloped surfaces and uneven loading may result in unanticipated movement of the Vehicle as soon as the Vehicle's Tires are free from the floor surface. Ensure that you have sufficient manpower to guide and control the vehicle.
- ⚠ WARNING** The Positioning Jacks cannot be used to hold a load on a permanent basis. Perform the desired work, then immediately lower the Vehicle back to the ground.
- ⚠ WARNING** Do **not** attempt to push the Positioning Jacks over obstacles.
- ⚠ WARNING** Do Not move vehicles by pushing on any unsupported sheet metal side panels of the vehicle's fenders, doors, or rear quarter panels (e.g., flat body panel areas). Instead, move vehicles by pushing on stronger areas such as: front or rear bumpers, wheels, or the base of the vehicle's A-pillars (windshield side frame).

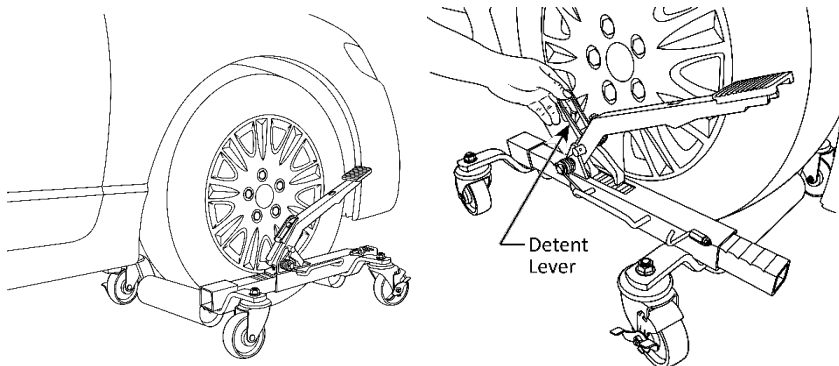
Operation

To raise the Positioning Jack:

1. With the Vehicle in the desired beginning location and on a suitable parking surface, set the parking brake, put the transmission in Park, or in First gear (manual transmission).
2. Take note of the following **BEFORE** proceeding:

- ⚠ DANGER** Note that with the vehicle raised off all tires, its movement can only be stopped by physically holding the vehicle from rolling. The vehicle's brakes and steering with wheels are useless when raised on the Dolly.

3. While the detent lever (on the base of the foot pedal) is placed down and released, expand the Jack by pulling the Rollers apart. Both rollers should be adjusted close to the Tire. Also verify there is at least 0.75 in. (19 mm) clearance between the Tire's outer sidewall and the inner Frame of the Positioning Jack. This ensures the Tire rests on the Rollers, while clearing the metal Frame of the Dolly as it is raised.



CAUTION!

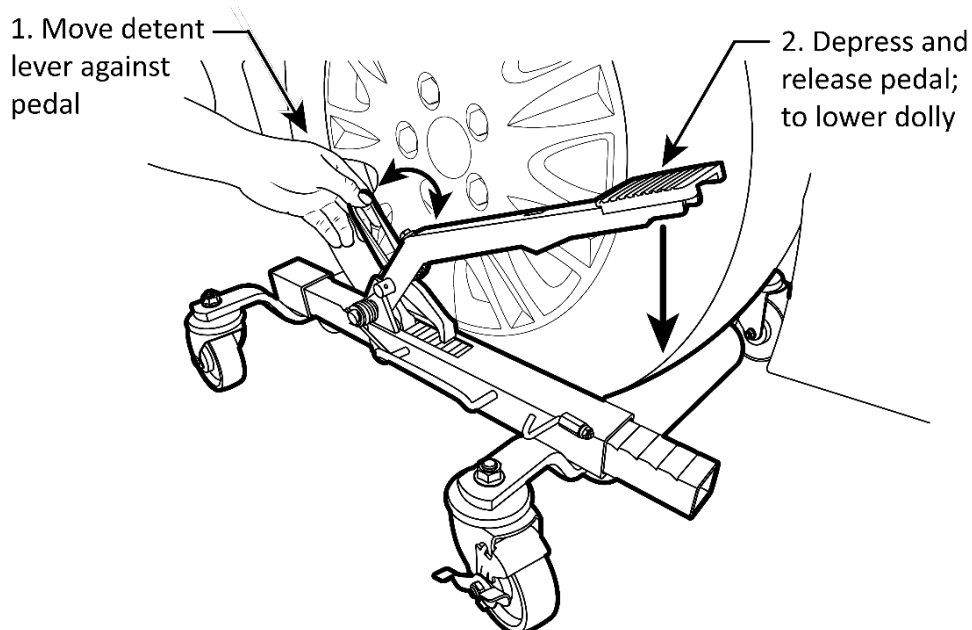
Rim damage may occur!
Do Not allow rims to contact Jack or Pivot Pins.

4. Move Detent Lever to the Up Position against foot pedal. Operate the Foot Pedal to ratchet each Tire up until it clears the ground.
5. Check the Vehicle for stability. If the Vehicle is **not** stable, lower the Detent Lever and slowly operate the pedal to lower the Vehicle back down to the ground and shift the Positioning Jack.
6. When the lift is complete and the Vehicle stable, move the Lock Catch to hold the Foot Pedal in the down position. Repeat for the remaining Positioning Jacks at each tire.
7. Roll the vehicle to the desired area by pushing on the vehicle's strong structures such as bumper ends, front windshield lower pillar areas, extreme rear areas of rear quarter panels, etc. Best to have at least two capable assistants helping. Note that when the vehicle is lifted from the ground, its movement can only be controlled by pushing and holding.
8. To lock each dolly, set the Locking Caster lever on the side of the caster wheel. Repeat for all dollies.

To lower the Vehicle:

⚠ CAUTION Verify that it is safe to lower the Vehicle, the Parking Brake is applied, and the transmission in Park or First gear (manual transmission). Verify the vehicle is not near a sloped area. Check that no personnel are near or in the Vehicle, no tools, equipment, or other unsafe conditions are present below the Vehicle. Have suitable Wheel Chocks and capable assistants at hand if needed.

1. Move the jack's detent lever to the Down position and pump the Foot Pedal until the dolly is free, and the tire is completely resting on the ground. Make sure the vehicle will securely remain in place and will not roll on its own. Unlock the respective Caster Wheel Lock.
2. Carefully roll away the Car Dolly Jack from the tire and store it.



Maintenance

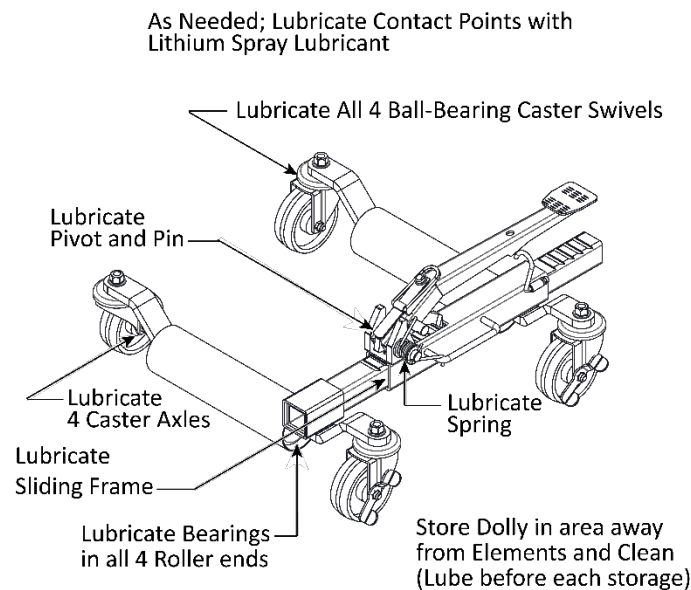
Make sure your Positioning Jacks are maintained on a regular basis. Keep the Positioning Jacks clean and well lubricated. If the Dollies have been exposed to rain or snow, sand, or grit they must be cleaned and dried before use or storing. Lubricate before storing.

Daily: Keep the Car Dollies clean and dry; if they get dirty or wet, clean them and relubricate.

Daily: Any product that operates abnormally should be removed from service until repaired.

Daily: If the product is accidentally subjected to an abnormal load or shock, it must be taken out of service immediately and inspected by a qualified service center.

Monthly: As noted below, lubricate the sliding frame's contact areas into the stationary frame section's opening with multi-purpose penetrating spray lubricant.



Lubricating the Dolly

To properly maintain your lift and to provide years of proper service, it's important to periodically inspect and lubricate key areas as needed. There are several lubrication points on the dolly. Put a small amount of lithium grease on each lubrication point before you use the dolly or on a monthly basis. The above graphic shows the lubrication points.

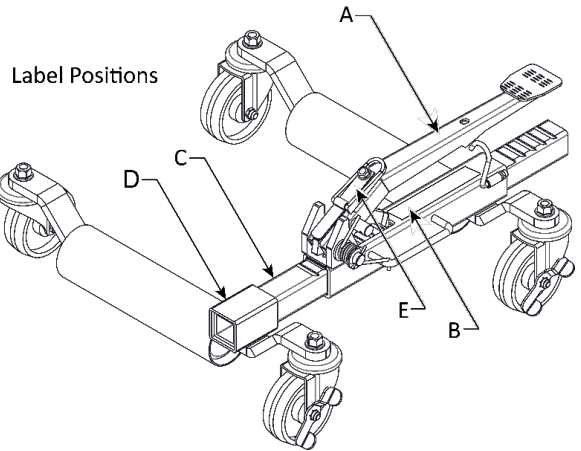
Annually: Perform an inspection on your Car Dollies and any damaged, loose, or worn parts are to be tightened or replaced with the manufacturer's specified parts.

- Cracked or damaged Roller or Frame components.
- Malfunctioning Swivel Casters or loose fasteners.
- Excessive wear, bending, or other damage.
- Lubricate all bearings and contact areas.

If you continue to have problems with your equipment, take the equipment out of service, then contact your dealer, visit [bendpak.com/support](https://www.bendpak.com/support), email support@bendpak.com, or call **(800) 253-2363** select option 7, then 4.

Labels

A



B

SAFETY WARNINGS

- ✓ Prior to use; read, understand, and follow instructions and safety precautions.
- ✓ NEVER exceed the rated lifting capacity of each jack.
- ✓ Use jacks on smooth, level surfaces. DO NOT operate on inclines.
- ✓ Unanticipated movement of vehicles will occur as soon as jacks lift vehicle from surface.
- ✓ The jack wheel restraints are for temporary use only and not meant to hold vehicle securely on unlevelled or unstable surfaces.
- ✓ DO NOT attempt to push jacks over obstacles; they are designed to be used on level and reasonably smooth surfaces only.
- ✓ DO NOT start the vehicle's engine, drive or power-move the vehicle with the jack in use; the jack is designed for hand maneuvering of vehicles only.
- ✓ To minimize instability and to maintain a low center of gravity, always use jack in the lowest lock pin position.
- ✓ Keep the jack clean and well lubricated to prevent corrosion.
- ✓ Inspect the jack before each use. DO NOT use jack if any part is found to be cracked, damaged or excessively worn.

PN 5905912

C

OPERATION PROCEDURES

1. With the Vehicle in the desired beginning location and on a suitable parking surface, set the parking brake, put the transmission in Park or in First gear (Manual Transmission).
2. Expand Positioning Jack by pulling the Rollers apart. Rollers should be adjusted so that both Rollers contact the Tire Tread. Also verify there is at least 0.75-in. clearance between the Tire's outer sidewall and the Inner Frame of the Positioning Jack.
3. Move Detent Lever to the Up Position. Operate the Foot Pedal to raise each Tire up until it clears the floor.
4. Check the Vehicle for stability. If the Vehicle is not stable, lower the detent lever and slowly adjust to lower the Vehicle back down to the ground and reposition the Positioning Jack.
5. When the Lift is complete and the Vehicle is stable, position the Stow Hook to secure the Foot Pedal in the down position.
6. Repeat for the remaining Positioning Jacks at each tire.
7. Roll vehicle to desired area by pushing on vehicle's strong structures such as bumper ends, extreme rear areas of rear quarter panels, etc.

TO LOWER THE JACK

1. Verify that it is safe to lower the Vehicle, that the Parking Brake is applied, and transmission is in Park or First gear (Manual Transmission). Verify that no one is near or in Vehicle, no tools, or unsafe conditions are present underneath Vehicle.
2. Move the lever to the Down position and depress and release the Foot Pedal until both the dolly is free, and tires are on the ground.
3. Carefully remove jacks.

30440 Agoura Rd., Agoura Hills, CA 91301
PN 5905911 TEL: 1-805-933-9970 • www.rangerproducts.com

D

TO RAISE TIRE:

1. Move Lever to **UP** position.
2. Pump the Foot Pedal until the tire is just lifted off the ground.

TO LOWER TIRE:

1. Move Lever to **DOWN** position.
2. Depress and release the Foot Pedal until tire is on the ground.

PN 5905909

E

⚠ CAUTION

Rim damage may occur!

DO NOT allow rims to contact jack or pivot pins.

PN 5905913

Troubleshooting

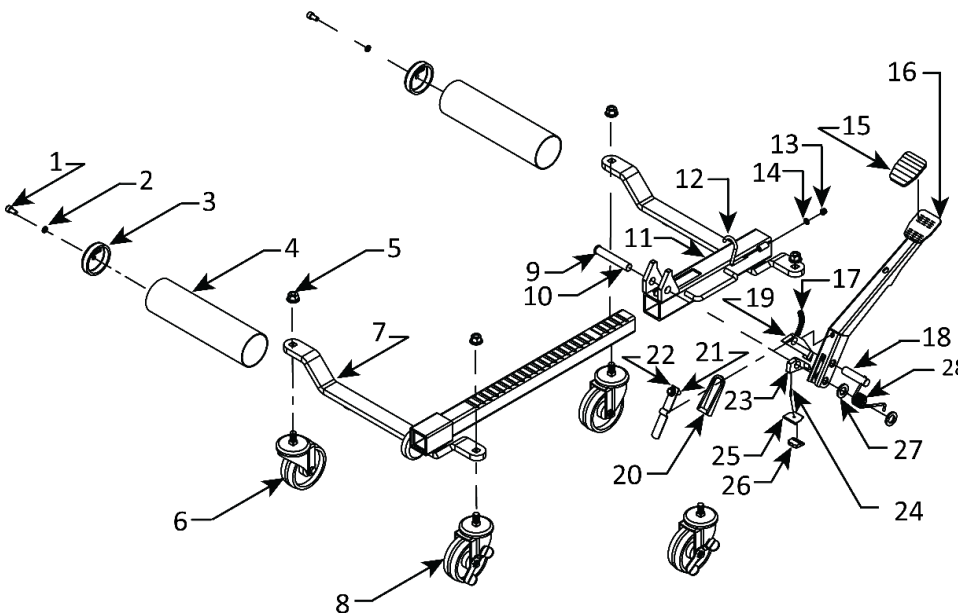
⚠ CAUTION Repair procedures must be accomplished by qualified personnel who are familiar with this equipment.

⚠ WARNING To prevent injury, perform any maintenance, and repair procedures when the Positioning Jacks are free of a load.

Trouble	Remedy
Positioning Jack does not lift.	Tighten fasteners. Malfunctioning Detent Lever or other damage.
Positioning Jack operates or rolls slowly.	Tighten fasteners. Dry contact areas or swivel heads. Requires lubrication.

If you continue to have problems with your equipment, take the equipment out of service, then contact your dealer, visit bendpak.com/support, email support@bendpak.com, or call **(800) 253-2363** select option 7, then 4.

Parts



ITEM NO	DESCRIPTION	QTY
1	Bolt M8X16	2
2	Lock Washer M8	2
3	Inner Support Ring	4
4	Supporting Roller	2
5	Ribed Nut M12	4
6	Universal Wheel	2
7	Active Bracket	1
8	Brake Universal Wheel	2
9	Pin	1
10	Spring Pling	1
11	Driven Bracket	1
12	Lock Catch	1
13	O-ring	1
14	Lock Nut M6	1
15	Rubber Pedal	1
16	Foot Link	1
17	Spring	1
18	Main Shaft	1
19	Drive Ratchet	1
20	Unlocking Buckle	1
21	Edge Bolt M8X30	1
22	Leaf Spring	1
23	Stop Ratchet	1
24	Reset Spring	1
25	Backstop Plate	1
26	Stopper	1
27	Washer	2
28	Torsional Spring	1



30440 Agoura Road.
Agoura Hills, CA 91301 USA
bendpak.com