

ADJUSTABLE WIDTH SET-UP

This page features excerpts from the manual. Please refer to the installation and operation manual for complete installation of the CL10AV3.

Lift Preparation:

1. With the column assemblies lying flat, remove cable and hose rolls from inside the columns and manually push carriages up to gain access to sheave at base of column.
2. Remove hex bolt and sheave pin from sheave bracket, **Fig. 2**
3. Determine the sheave location on the lower bracket based on the overall height and width of lift at its chosen configuration. See **Fig. 3** below.

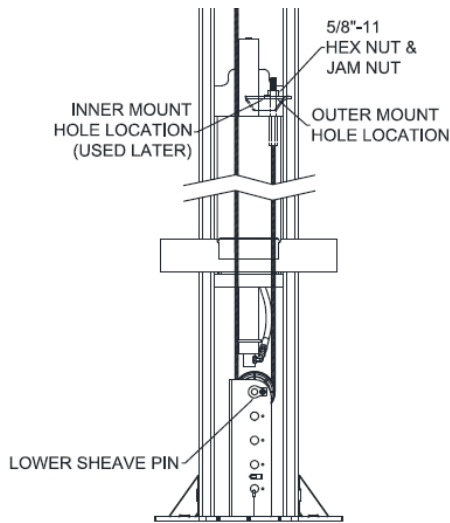


Fig. 2 - Cable Routing Layout

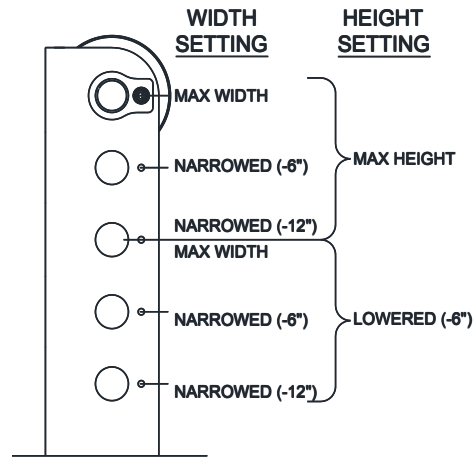


Fig. 3 - Sheave Position in Lower Bracket

Overhead:

1. Before raising overhead into position install 4 (2 per column) hex flange bolts and nuts in middle hole of column extension for temporary support of overhead. Lift overhead assembly up into position and install with 8 (4 per column) 3/8-16 x 3/4" lg hex flange bolts and hex flange nuts per side as shown in **Fig. 8**.

► For the max width position, the outer overhead holes will be used. For the (-6") width, one set of outer overhead holes and one set of inner overhead holes will be used. For the (-12") width, the inner set of overhead holes will be used.

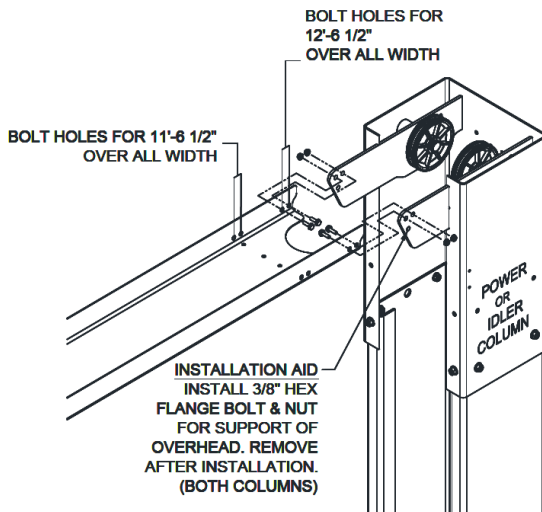


Fig. 8 - Overhead Assembly

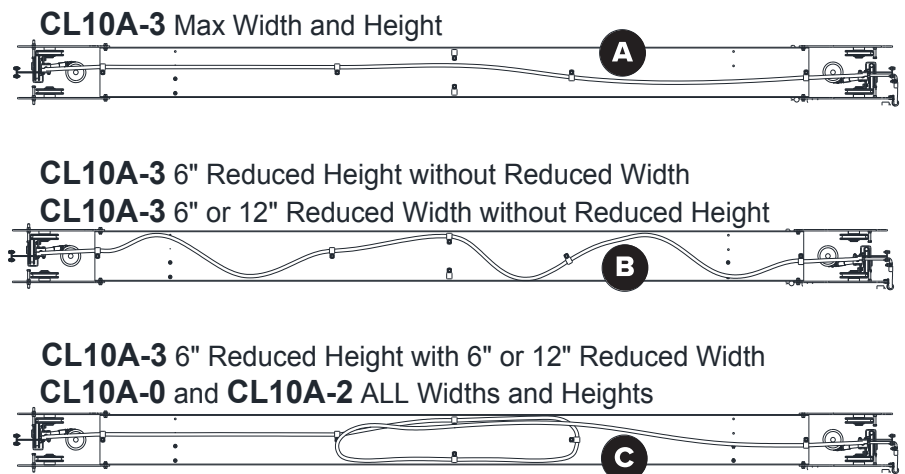


Fig. 13c - Hose Routing, Overhead

